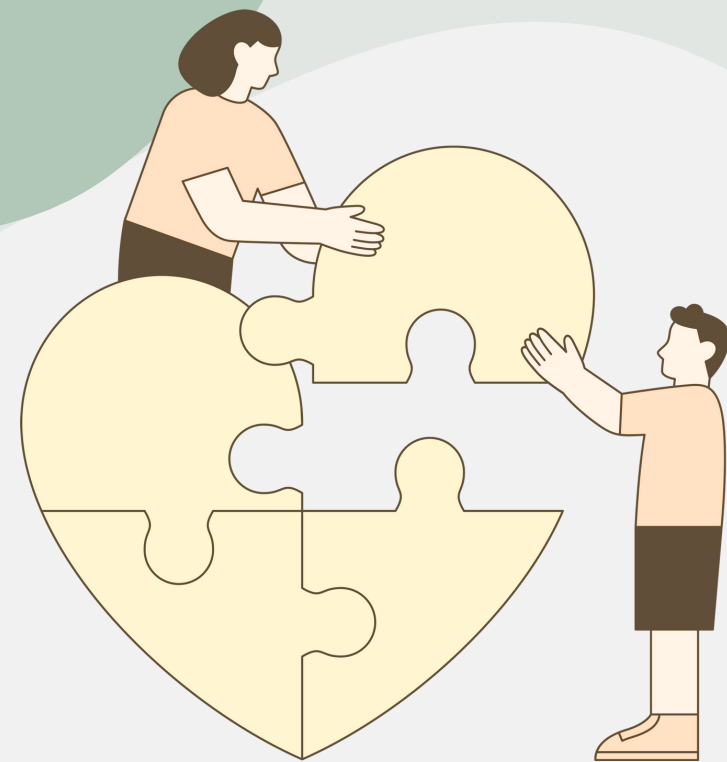


学校に行きづらい子とその親のための居場所SOW

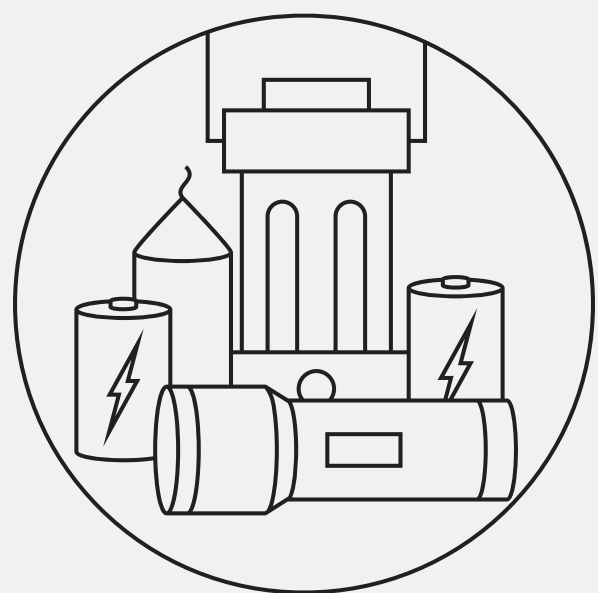
SOW IS A PLACE FOR CHILDREN WITH SCHOOL REFUSAL BEHAVIOR AND THEIR PARENTS/GUARDIANS.

講演会のお知らせ



LECTURE
ANNOUNCEMENT

ENGLISH SUPPORT AVAILABLE



SPEAKER

SAKIKO KANBARA
神原 咲子 教授

11/9(SAT) 12:30-14:30

発達障害や不登校の子どもを持つ 家族のための防災講座

大災害が起こった時、特性があったり不登校の子どもにとって避難所はハードルが高すぎる。その時、親は何を想定し、どうすれば良いのか？災害看護の専門家で、被災時の親子の対応に詳しい神戸市看護大学災害看護・国際看護学教授 神原咲子先生にお話を伺います。

参加費 300円
場所 篠原小学校 体育館
持ちもの 上履き・靴を入れる袋



DISASTER PREVENTION SEMINAR For a Family who have a child / children with Developmental Disorder / School Refusal Behavior

During major disasters, evacuation shelters can be tough for a child / children with developmental disorders or school refusal behavior. What can we do? Join the Seminar as we invite disaster nursing expert Sakiko Kanbara, Professor, Kobe City College of Nursing, Disaster Nursing and Global Health, to discuss effective responses for families.

Fee: 300 Yen
Venue: Gymnasium of the Shinohara Elementary School,
Items to bring: indoor shoes, shoe bag

APPLY HERE
お申込はこちらから

