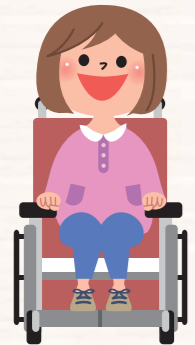


## How to Access the Yokohama City Special Needs Education Center



Please note that the roads are some times too narrow for cars.



### By train / on foot

- Get off at Wadamachi Station on the Soutetsu Railway Line. (Express trains do not stop at this station. Please take a local train.)
- It's a 10-minute walk from the south exit of Wadamachi Station (The hill is quite steep.).

### By car

- It takes 5 minutes from Yokohama Shindou "Fujitsuka Interchange."
- National highway No.16 ①"Wadamachi Station Entrance," ②turn right at Suidoumichi, ③turn left at the Bukkoudanchi entrance, and go up the slope until the top.
- Please search for "Bukko Elementary School" (仏向小学校) on your car navigation system. The Center is beside this school.

### Contact address

〒240-0044 845-2 Bukkou-cho, Hodogaya-ku, Yokohama City  
 Special Support Education Consultation Division, Yokohama City Board of Education  
 Tel: 045-336-6020 (8:45 - 17:00) ※Inquiries in Japanese only

- For more information and the application form, please see our web site.

<https://www.city.yokohama.lg.jp/lang/residents/en/child/tokubetusien.html>



# Yokohama City Special Needs Education Center Information on Enrollment and Education Consultation

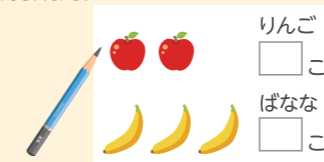


Our center provides consultations to parents and guardians of students who have special needs. Our therapists and education counsellors will conduct developmental examinations, explain about the various Places of Learning available in Yokohama, and make a recommendation based on your child's special needs.

## Various Places of Learning

### Regular School Classes (Ippan Gakkyuu)

Municipal schools in Yokohama City have taken steps to make lessons more accessible, such as through the use of specific teaching methods and teaching materials.



### Coaching Classes for Children with Special Needs (Tsuu-kyuu Shidou Kyoushitsu)

Coaching Classes are provided at 22 schools in Yokohama City. At these schools, eligible children can attend regular school classes and also receive special guidance to address their individual learning and living needs. There are classes for students with hearing and speech impairments, visual impairments, and emotional and behavioral disorders.



### Classes for Students with Special Needs (Kobetsushien Gakkyuu)

Classes for students with special needs are provided at all municipal elementary and junior high schools in Yokohama City. These classes are run in small groups with the aim of providing a program of learning according to the individual needs of each and every child. This includes support for students with intellectual disabilities, autism or emotional and behavioral disorders, and low vision.

### Special Needs Schools (Tokubetsu Shien Gakkou)

These schools teach small classes of students whose lives are being affected by their disabilities how to gain independence and lead fulfilling lives. There are schools for students with visual, hearing, intellectual, physical, and health impairments.



※For a list of special needs schools, please visit the Yokohama City Board of Education web site.

City of Yokohama home page ▶ Language ▶ English

▶ Child Rearing and Education ▶ Education for children with special needs

## Consultations for children who are going to enter elementary school

### How to apply

Download the application form from the [Yokohama City Special Needs Education Center web site](#). Fill it in and send it to us by post.

### Application Deadlines

| Special Needs Schools (Tokubetsu Shien Gakkou) | Coaching Classes for Students with Special Needs (Tsuu-kyuu Shidou Kyoshitsu) | Special Needs Classes (Kobetsushien Gakkyuu) |
|--|---|--|
| End of June                                    | End of July   | End of July                                  |

※Applications should reach us before the above deadline. You also need to contact your local school to consult with the principal before the consultation at our center.

### Briefing sessions for parents or guardians of children starting school

- We hold briefing sessions in May and June every year for parents or guardians who are considering special needs education for their children. Regional medical centers hold briefing sessions as well.
- We explain about the different Places of Learning for children who have special needs and how they are used.
- Information on the briefing sessions is announced on our web site in April.



## Consultations for students currently attending elementary or junior high school

### How to apply

Please consult with your enrolled school and apply **through the school**. Ask your school for an application form or download it from our web site.

### Application Deadlines

| Special Needs Schools (Tokubetsu Shien Gakkou) | Coaching Classes for Students with Special Needs (Tsuu-kyuu Shidou Kyoshitsu) | Special Needs Classes (Kobetsushien Gakkyuu) |
|--|---|--|
| End of June                                    | End of October  | End of December                              |

※As applications should reach us before the above deadline, it is advisable to consult with your school about the application as early as you can.

## Application/Consultation Process

### Children who are going to enter elementary school

Send an application form to us by post

Application

A notice of the date of the consultation will be sent to you about a month before the consultation.

Notice of consultation day



### Current elementary and junior high school students

Submit an application form to your school

You will receive a notice of the consultation through your school about a month before the consultation.

※Notice may be sent to your home address by mail during summer holidays.

### On the day of the consultation

1 Education counselors introduce themselves and explain the consultation process.

2 Children take developmental examinations.  
 ※Children who are going to elementary school also join in group activities.  
 Parents and guardians consult with education counselors.



3 Parents and guardians consult with education counsellors about appropriate places of learning for their children, based on the results of their developmental examinations.

4 Education counselors inform parents and guardians about how to use the recommended place of learning.

- ※Consultations last approximately 2 hours.
- ※Consultations are held from Monday to Friday (except for national holidays or New Year holiday season), and start at either 9:30 or 13:10.

